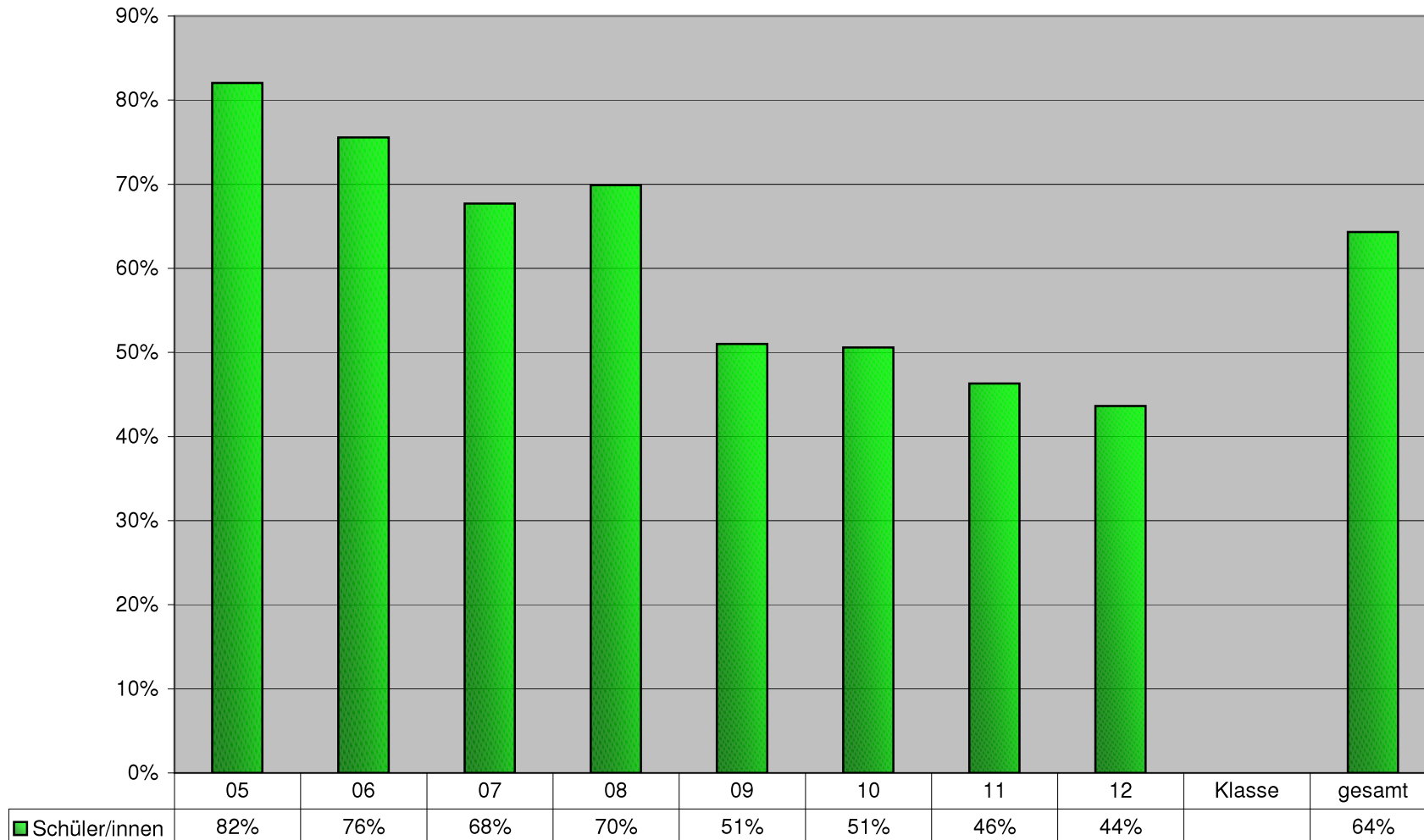


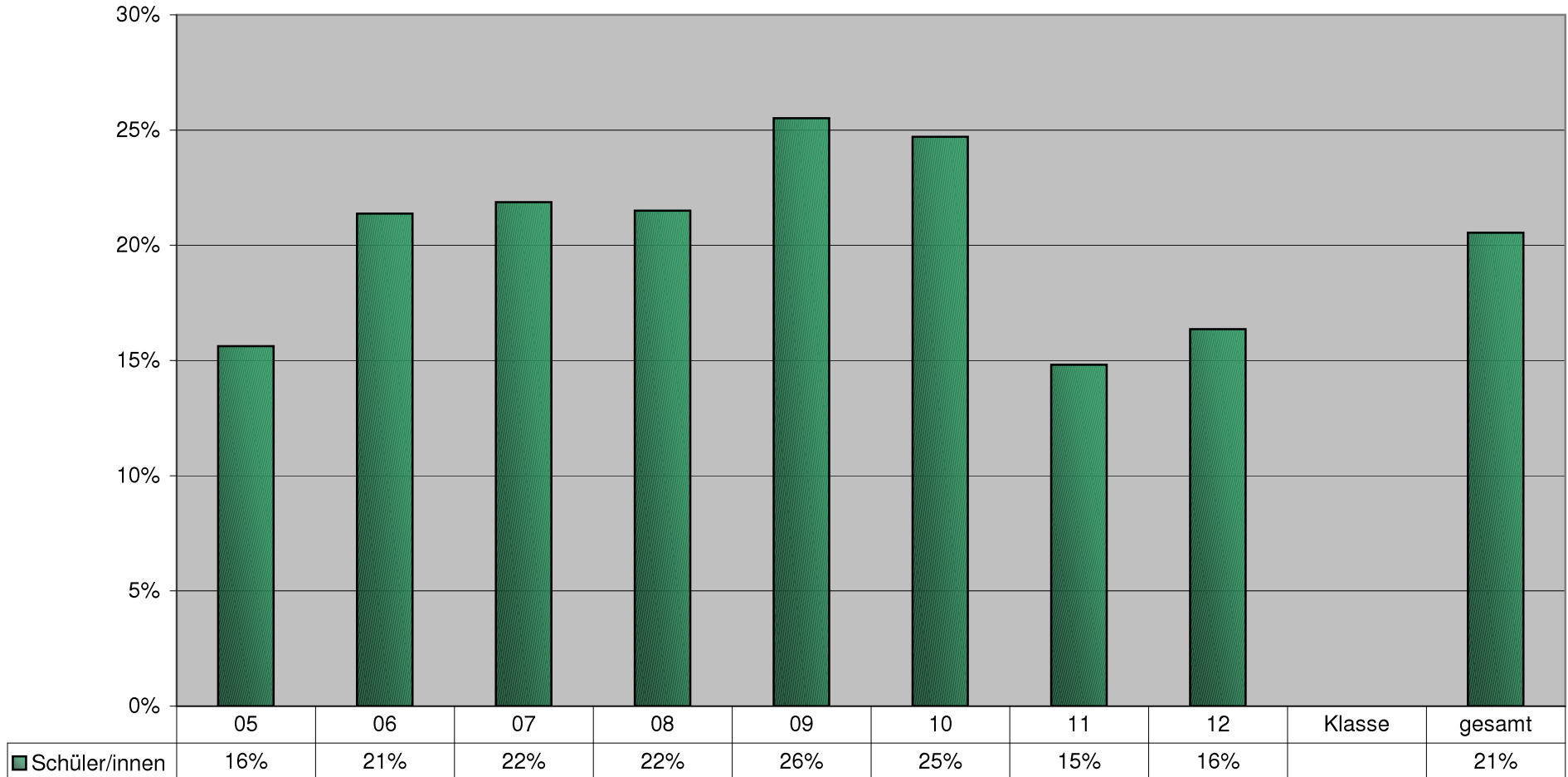
# Nie-Raucher/innen

Auswertung aus: JEA THG 2002/2003 v. 22.06.2003



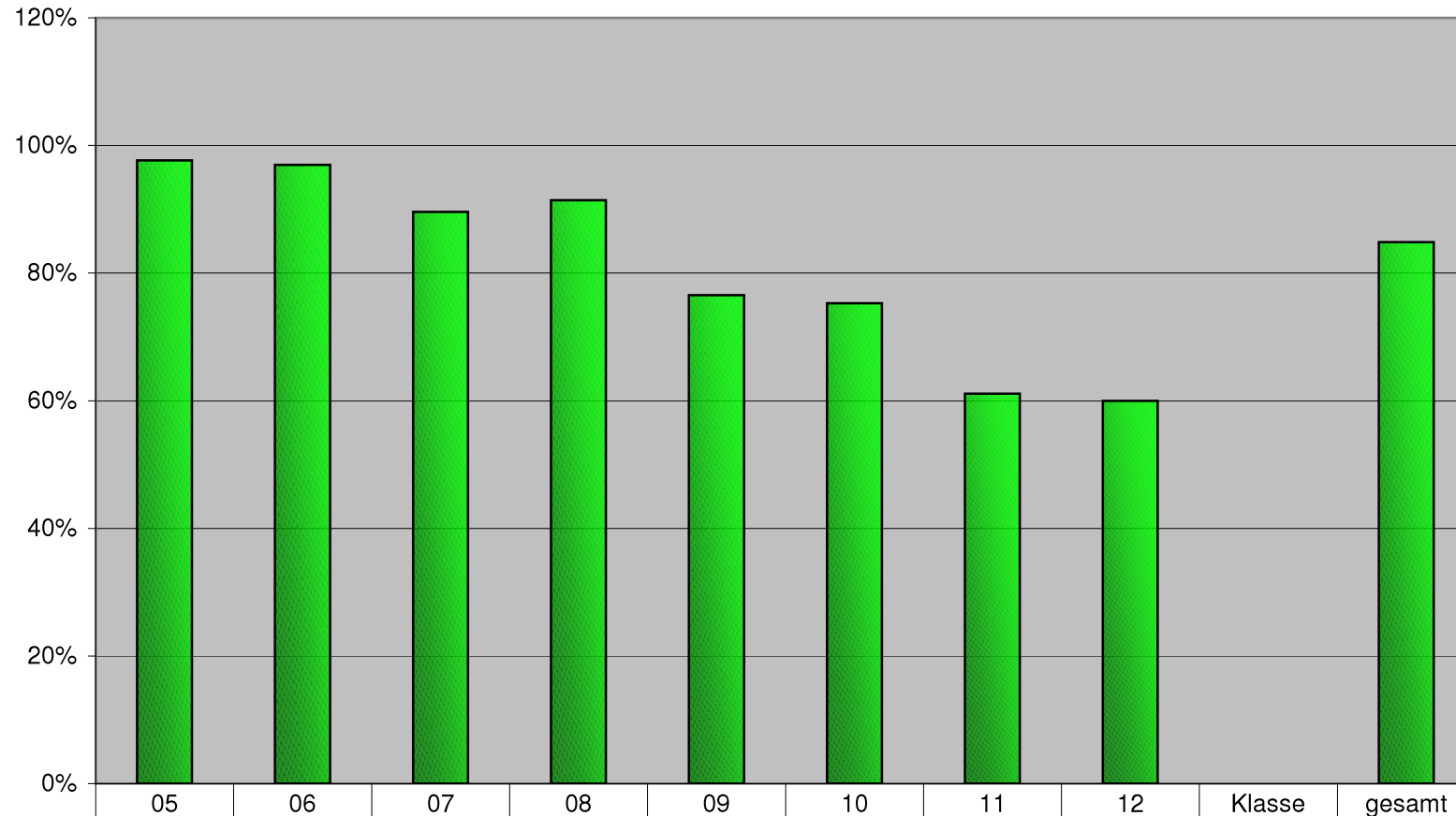
# Probier-Raucher/innen

Auswertung aus: JEA THG 2002/2003 v. 22.06.2003



# Nichtraucher/innen (nie + schon mal probiert)

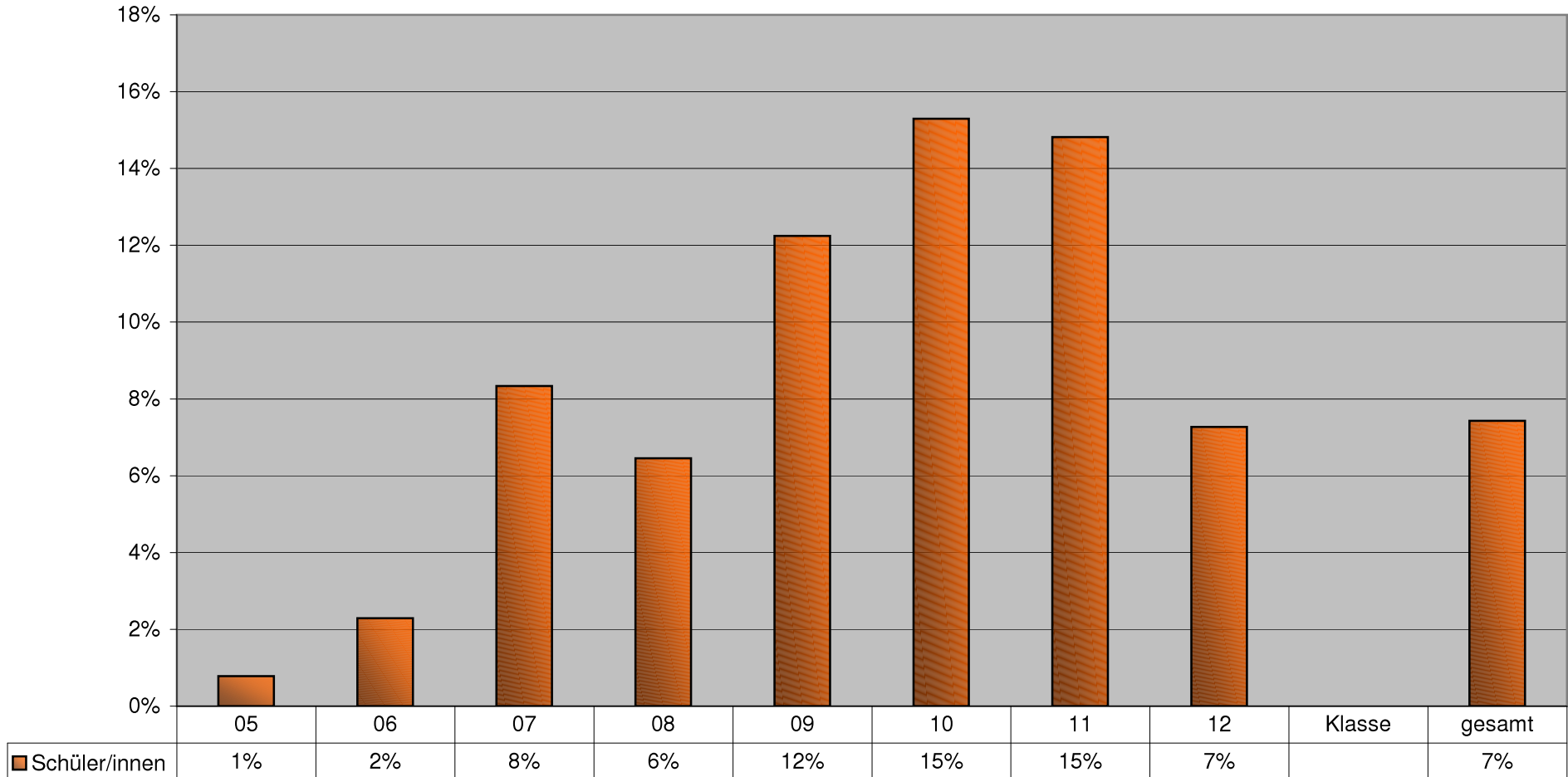
Auswertung aus: JEA THG 2002/2003 v. 22.06.2003



|                 |     |     |     |     |     |     |     |     |  |     |
|-----------------|-----|-----|-----|-----|-----|-----|-----|-----|--|-----|
| ■ Schüler/innen | 98% | 97% | 90% | 91% | 77% | 75% | 61% | 60% |  | 85% |
|-----------------|-----|-----|-----|-----|-----|-----|-----|-----|--|-----|

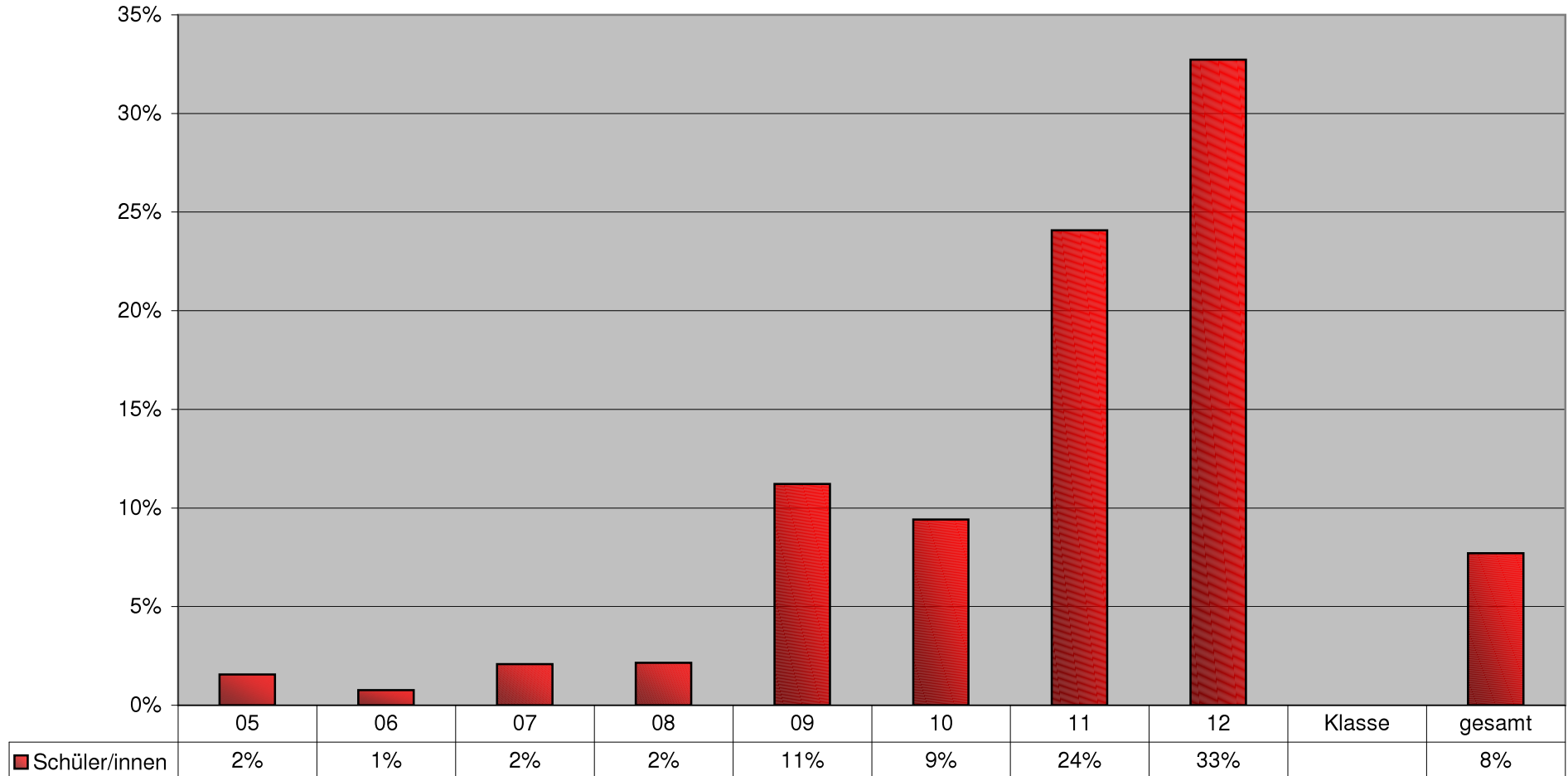
# Gelegentliche Raucher/innen

Auswertung aus: JEA THG 2002/2003 v. 22.06.2003



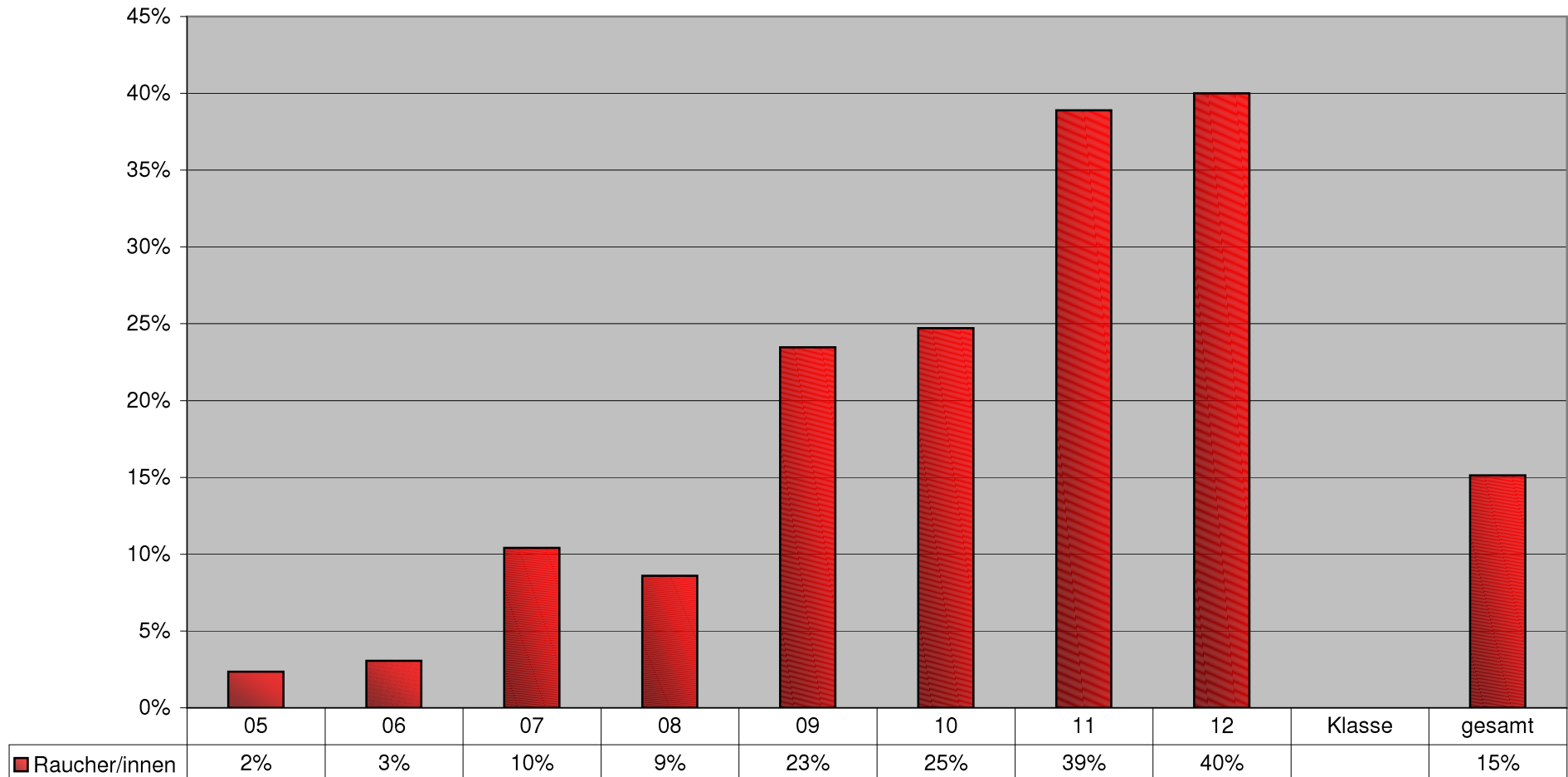
# Regelmäßige Raucher/innen

Auswertung aus: JEA THG 2002/2003 v. 22.06.2003



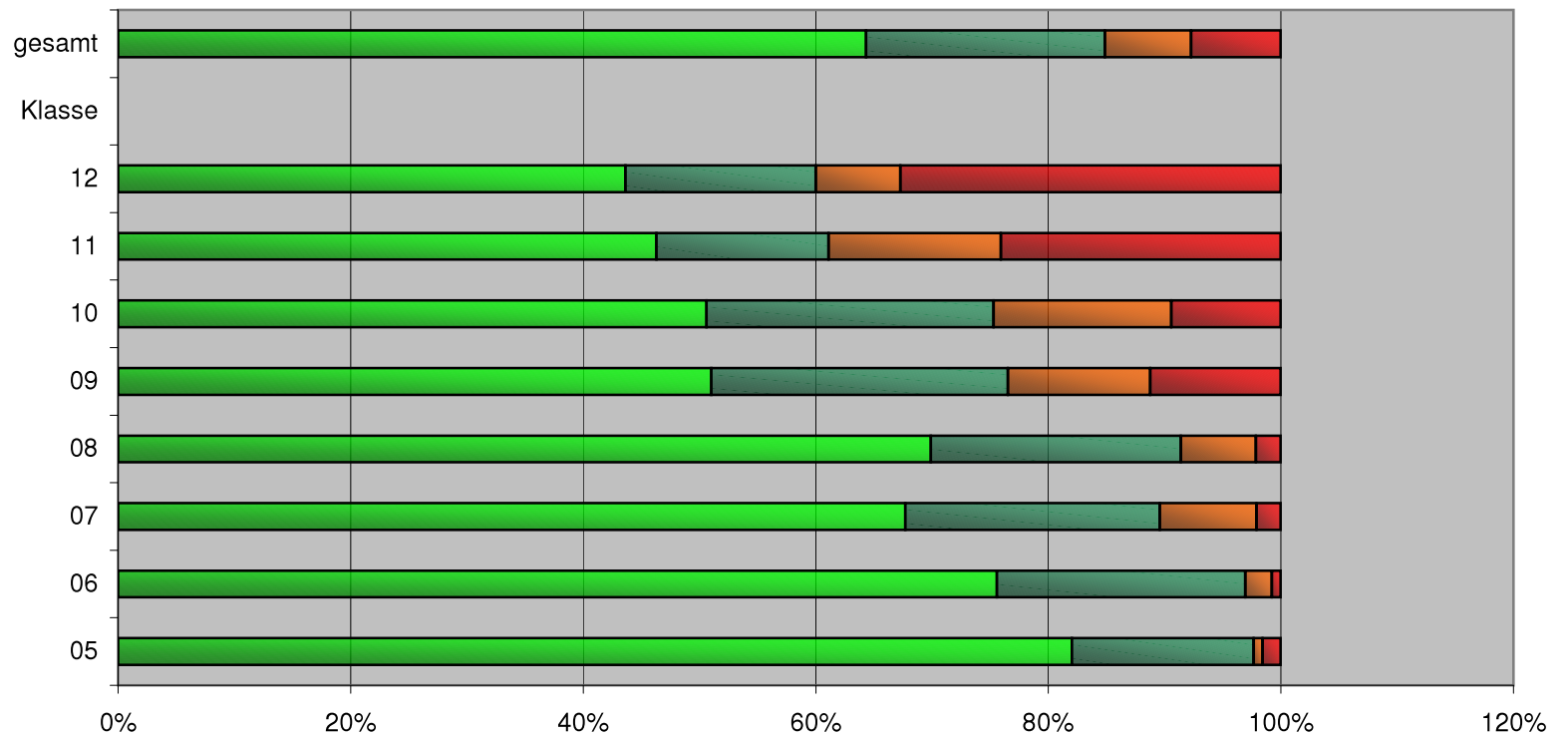
# Raucher/innen (selten + regelmäßig)

Auswertung aus: JEA THG 2002/2003 v. 22.06.2003



# Nicht-Raucher/innen > Raucher/innen-Anteil THG

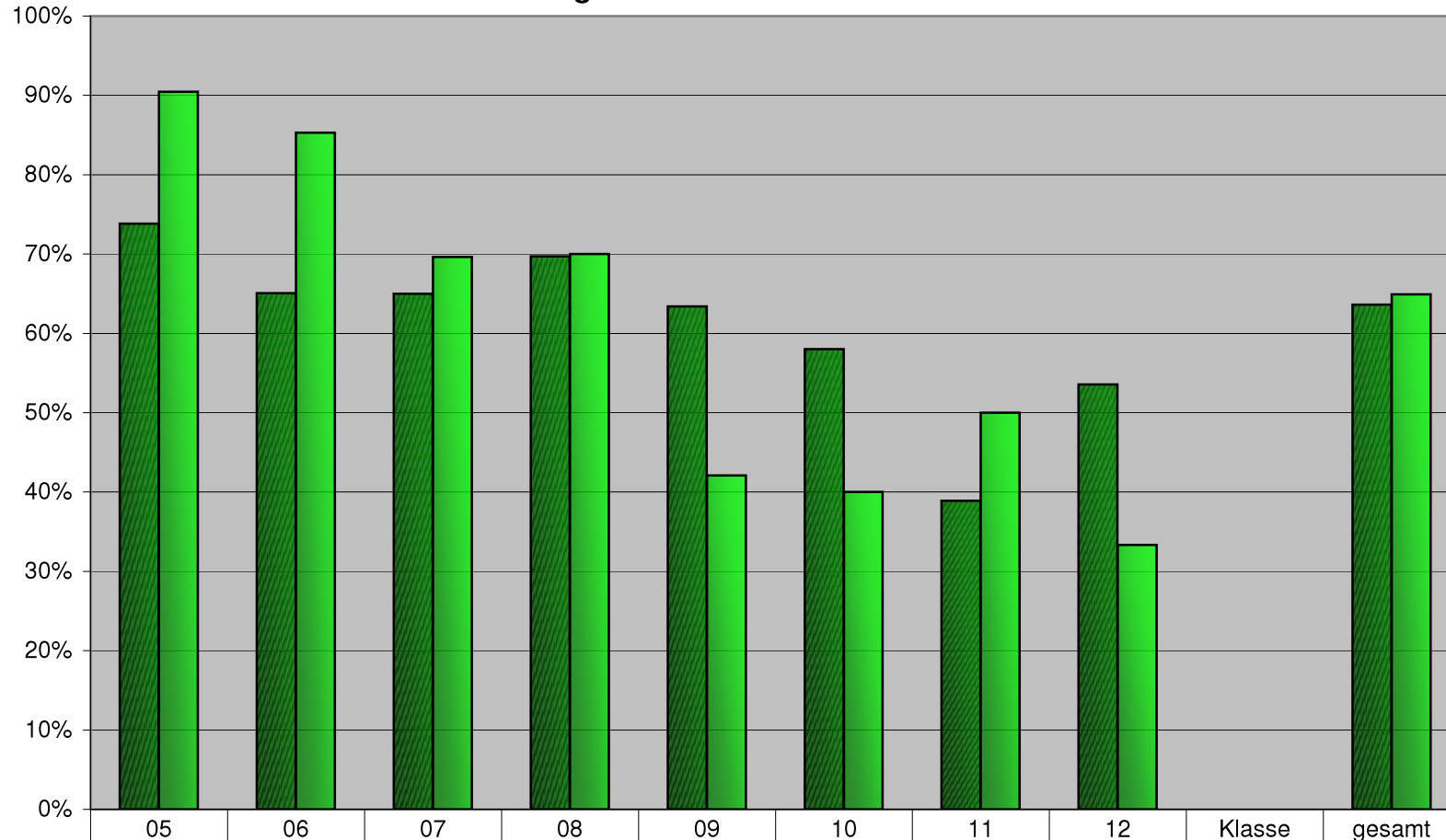
Auswertung aus: JEA THG 2002/2003 v. 22.06.2003



|                                      | 05  | 06  | 07  | 08  | 09  | 10  | 11  | 12  | Klasse | gesamt |
|--------------------------------------|-----|-----|-----|-----|-----|-----|-----|-----|--------|--------|
| ■ Raucher/innen: regelmäßig          | 2%  | 1%  | 2%  | 2%  | 11% | 9%  | 24% | 33% |        | 8%     |
| ■ Raucher/innen: gelegentlich        | 1%  | 2%  | 8%  | 6%  | 12% | 15% | 15% | 7%  |        | 7%     |
| ■ Nichtraucher/innen: schon probiert | 16% | 21% | 22% | 22% | 26% | 25% | 15% | 16% |        | 21%    |
| ■ Nichtraucher/innen: nie            | 82% | 76% | 68% | 70% | 51% | 51% | 46% | 44% |        | 64%    |

# Nie-Raucher/innen

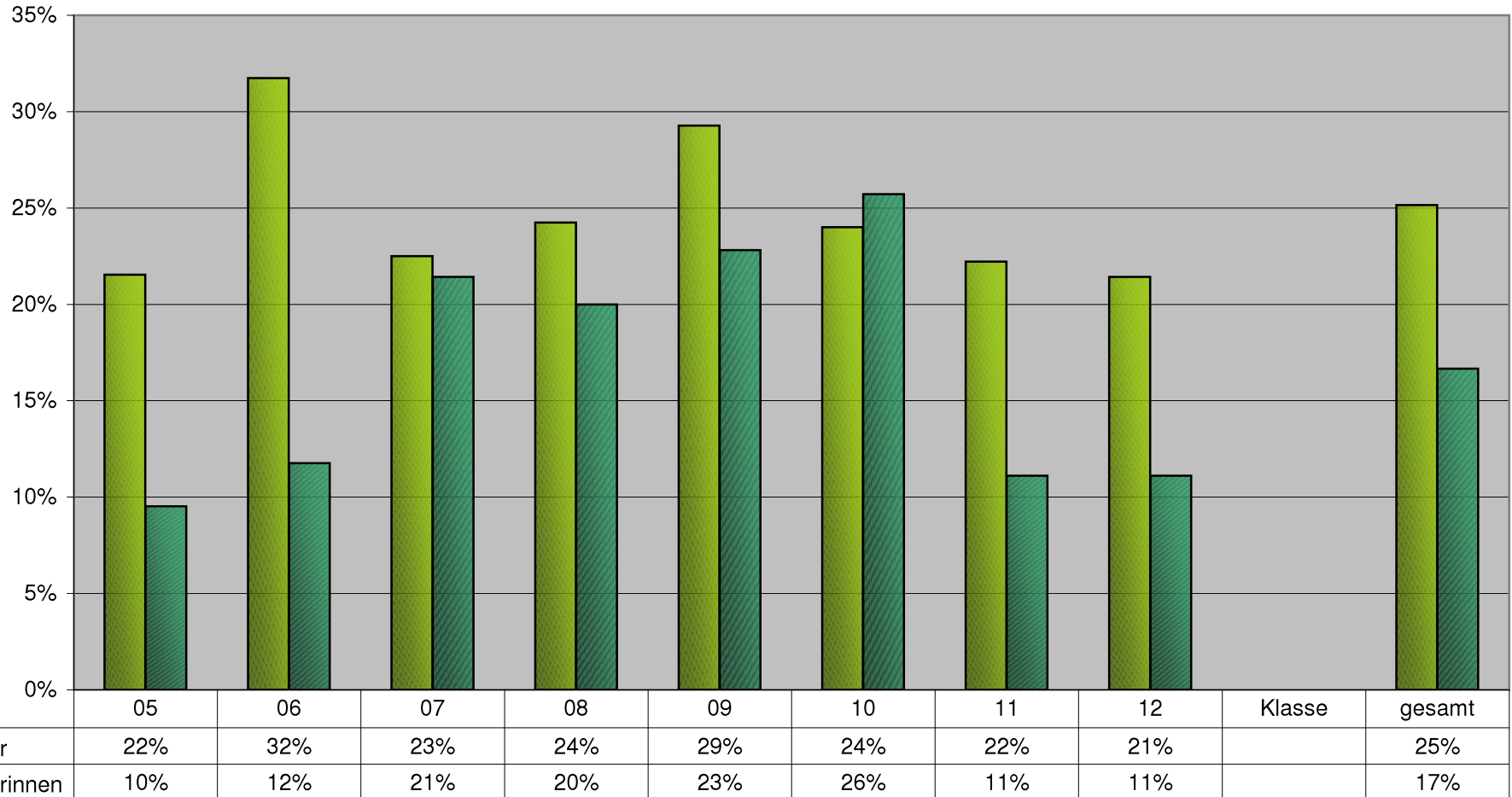
Auswertung aus: JEA THG 2002/2003 v. 22.06.2003



|                |     |     |     |     |     |     |     |     |  |     |
|----------------|-----|-----|-----|-----|-----|-----|-----|-----|--|-----|
| ■ Schüler      | 74% | 65% | 65% | 70% | 63% | 58% | 39% | 54% |  | 64% |
| ■ Schülerinnen | 90% | 85% | 70% | 70% | 42% | 40% | 50% | 33% |  | 65% |

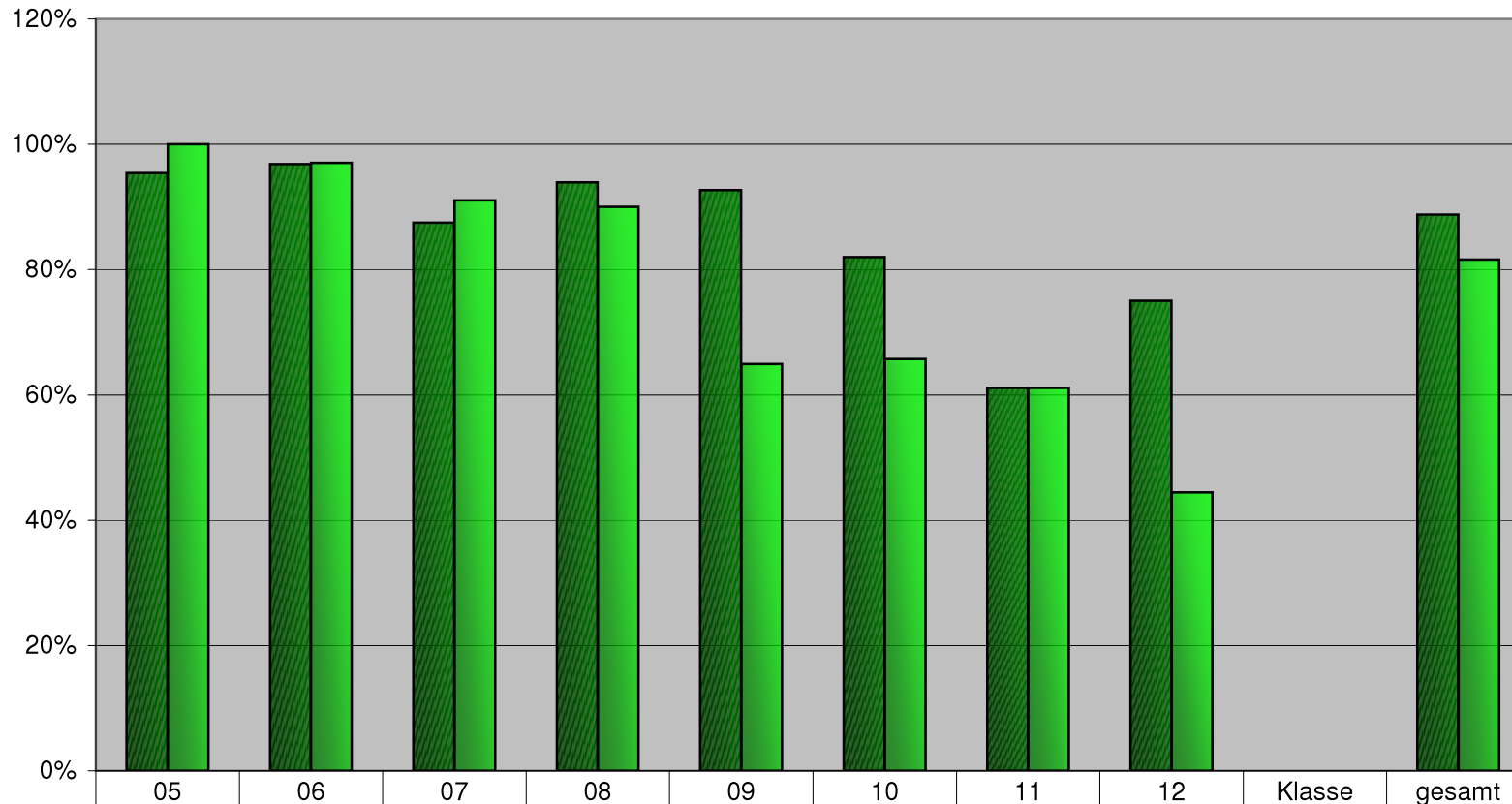
# Probier-Raucher/innen

Auswertung aus: JEA THG 2002/2003 v. 22.06.2003



# Nichtraucher/innen (nie + schon mal probiert)

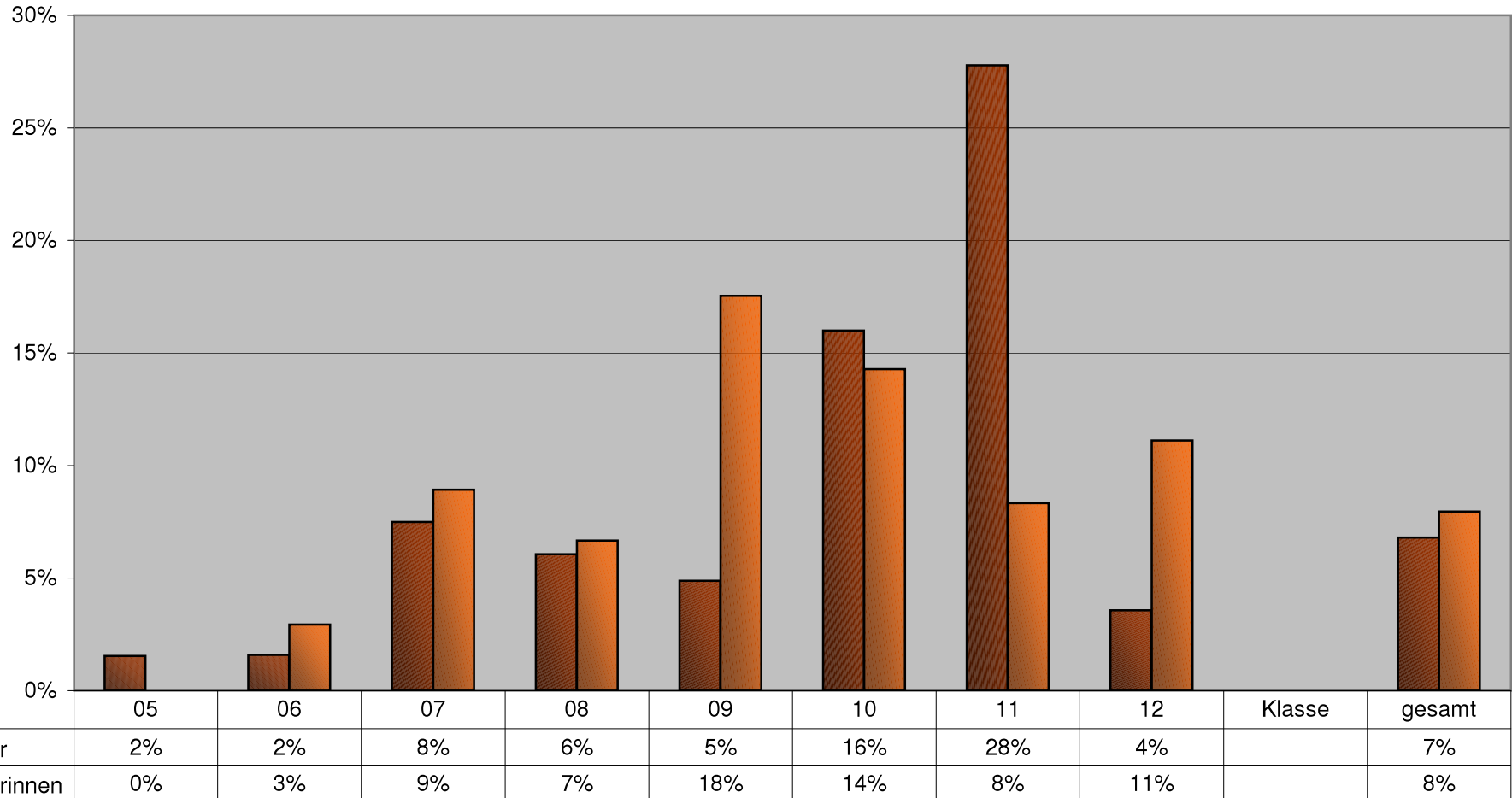
Auswertung aus: JEA THG 2002/2003 v. 22.06.2003



|                |      |     |     |     |     |     |     |     |  |     |
|----------------|------|-----|-----|-----|-----|-----|-----|-----|--|-----|
| ■ Schüler      | 95%  | 97% | 88% | 94% | 93% | 82% | 61% | 75% |  | 89% |
| ■ Schülerinnen | 100% | 97% | 91% | 90% | 65% | 66% | 61% | 44% |  | 82% |

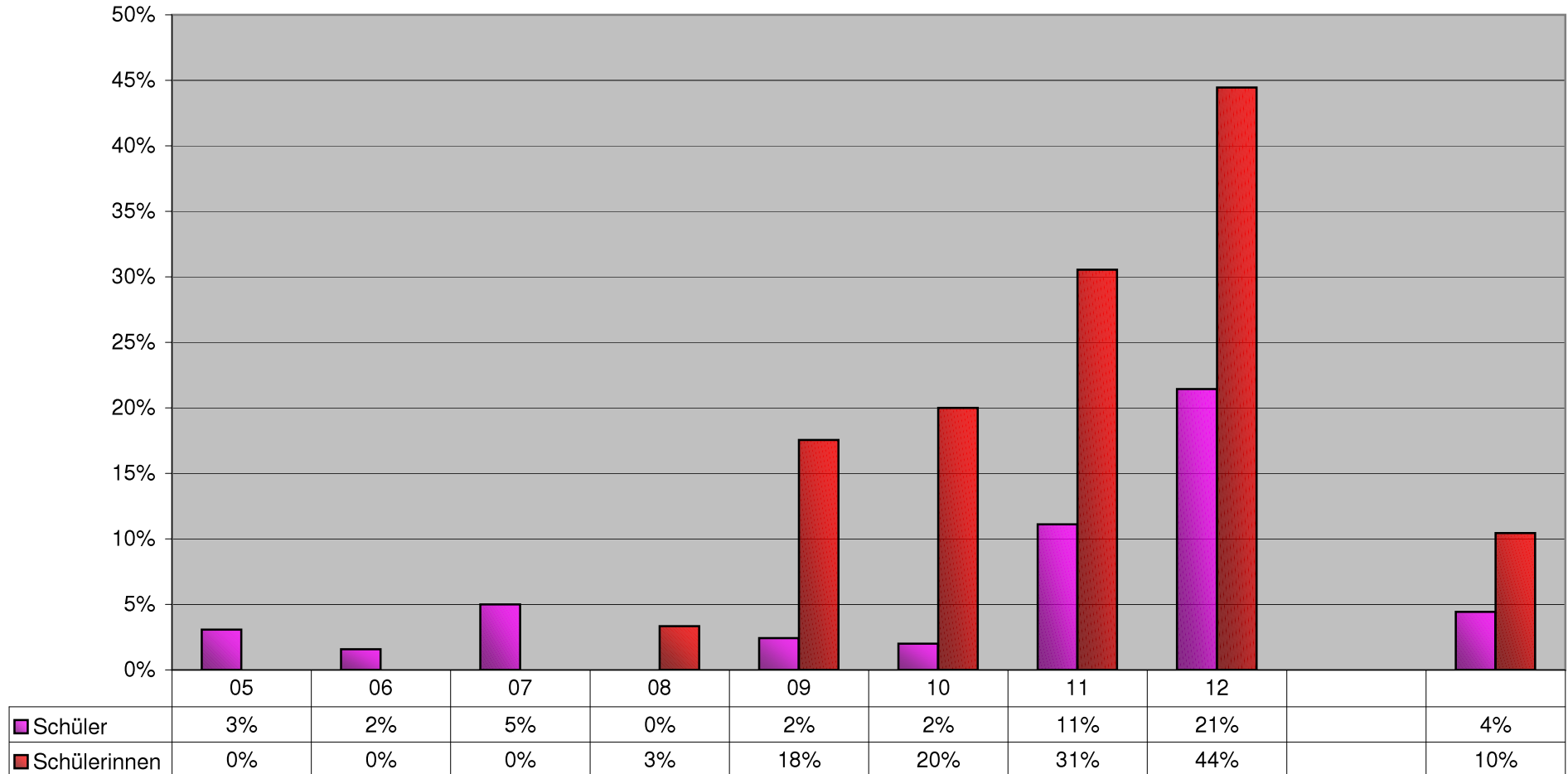
# Gelegentliche Raucher/innen

Auswertung aus: JEA THG 2002/2003 v. 22.06.2003



# Regelmäßige Raucher/innen

Auswertung aus: JEA THG 2002/2003 v. 22.06.2003



# Raucher/innen (gelegentlich + regelmäßig)

Auswertung aus: JEA THG 2002/2003 v. 22.06.2003

